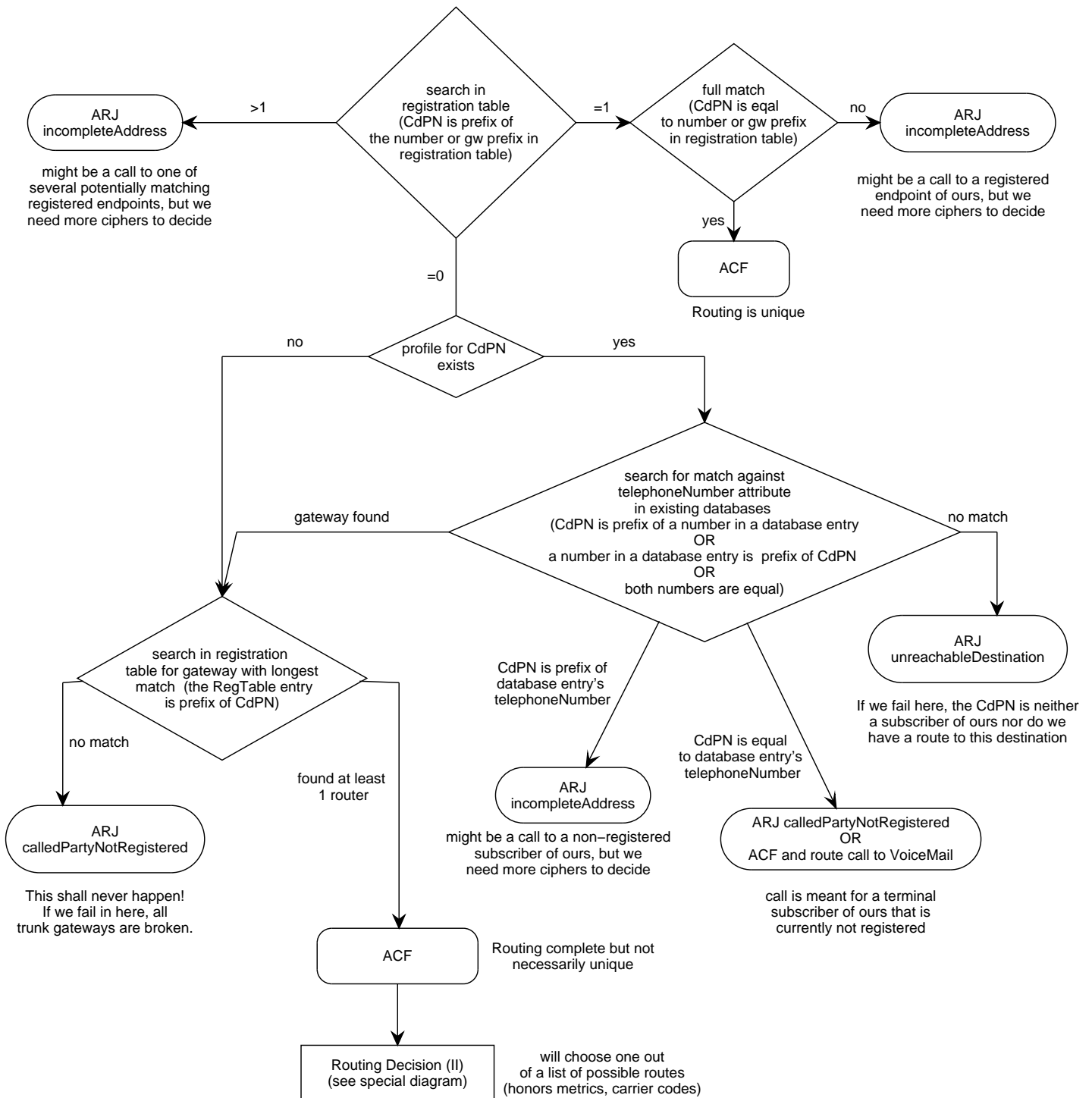


Routing Decision (I)



Prefix of:
+49532 is prefix of +49532801520
Equal:
+49532 is not equal +49532801520
+49542801520 is (only) equal to +49542801520

for a CdPN 495246801867, we know that 495246 is countryCode + AreaCode and 801867 is subscriber number + extension
LDAP search filter is (&((telephonenumber=4952461867*)(telephonenumber=49524680186.)*(telephonenumber=4952468018.)*
(telephonenumber=495246801...*)(telephonenumber=49524680....*)(telephonenumber=4952468.....*)))