

For Microsoft Host Integration Server

NetShuttle™ is a high-performance communications controller for connecting SNA and TCP/IP networks to IBM-compatible mainframes.



Built on a “ruggedized” rack-mount system, NetShuttle attaches directly to your mainframe using one or optionally two ESCON connections. NetShuttle connections use IBM enabling technology to guarantee channel compatibility. NetShuttle provides dual on-board 10/100/1000 Ethernet connections and the ability to add two optional network connections which may be either 10/100/1000 Ethernet or Token Ring.

IBM ESCON Enabled

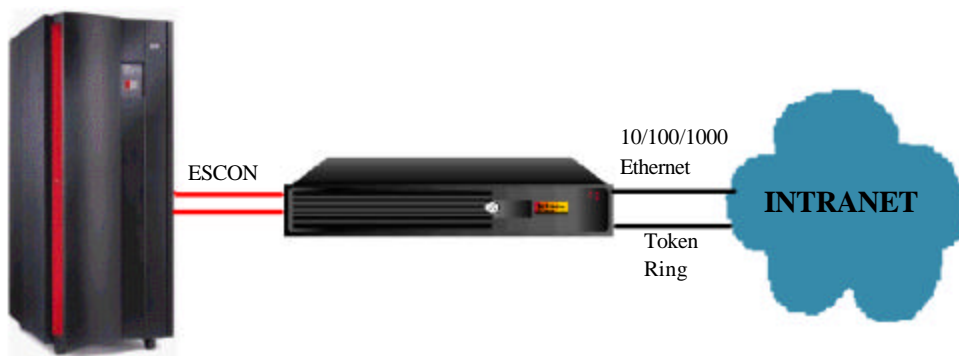
The Netshuttle implements IBM's ESCON Enabler Technology, providing compatibility to IBM's ESCON channel.

Built on Microsoft's Windows 2000 Server, NetShuttle includes Microsoft's latest Host Integration Server 2000 software to provide a high-speed SNA Gateway for 3270, TN3270, and LU 6.2 traffic. NetShuttle also includes Bus-Tech's TCP/IP Direct Connect software allowing NetShuttle to operate as a channel attached TCP/IP router. Optional Multi-Path Channel Plus software provides the highest possible throughput for TCP/IP traffic over an ESCON interface.

When combined with support for ESCON Multiple Image Facility (a standard feature of Bus-Tech ESCON interfaces), Host Integration Server and TCP/IP Direct Connect allow networked clients access to multiple logical partitions (LPARs) or mainframes through a

single NetShuttle controller.

Built on Intel Xeon processor technology NetShuttle is designed for high-availability including hardware redundant hard drives, hot-swappable power supplies and fans. NetShuttle uses Intel® Server Management to provide automatic health monitoring, proactive messaging, and post-issue diagnostics.



BENEFITS

- Designed for Simplicity –**
 The NetShuttle is pre-installed with ESCON and network connections, Microsoft Windows 2000 Server and Host Integration Server 2000, TCP/IP software, and optional software based on your requirements. Setup is simple and easy.
- Flexible Connectivity Options –**
 NetShuttle comes standard with one ESCON and two 10/100/1000 Ethernet interfaces. A second ESCON interface and two more LAN Interfaces are available as options.
- Support for Mainframe-based TCP/IP**
 Standard TCP/IP Direct Connect software allows NetShuttle to operate as an ESCON-attached TCP/IP router concurrent with SNA Gateway capabilities. MPC+ software can be added to satisfy applications demanding the highest possible throughput.
- Multiple LPAR Support -**
 ESCON connections attach directly to a mainframe ESCON port or to an IBM ESCON Director port. NetShuttle provides full support of IBM ESCON Multiple Image Facility (EMIF). A single NetShuttle ESCON interface and LAN adapter can concurrently support SNA and TCP/IP traffic to multiple Logical Partitions (LPARs) on one or more mainframes.
- Built for Reliability/Serviceability -**
 NetShuttle includes hot-swappable, redundant power supplies, disks, and fans. System disks are mirrored to allow the disk to keep running under the most difficult circumstances. Power supplies, fans, disks, and channel/LAN option cards can all be replaced without the use of any tools.

SPECIFICATIONS

Physical Attributes

Rack Mount	Mounts into 19" EIA Standard 310-D (deep) Rack
Dimensions	3.4"H (2U) x 16.93"W x 25.51"D
Color	Black Trim
Power Supply	Dual redundant hot-swappable 500W 1 + 1 PFC
Voltage	6.7 Amp at 115v 3.3 Amp at 220v

Environment

Temperature (ambient)	
Operating	+10 ⁰ C to +35 ⁰ C
Storage (non-operating)	-40 ⁰ C to +70 ⁰ C
Humidity (non-operating)	90% at 35 ⁰ C non-condensing
Acoustics	<55dBA (rack-mount) idle state
Electrostatic Discharge	+/- 15kV

Security

Rack mount chassis	Mechanical lock on front bezel plus chassis intrusion switch
--------------------	--

Connectivity Options

Channel (maximum of 2)	IBM Enabled ESCON Channel
LAN Connections (Maximum of 4)	
(2) On-board built-in	Gigabit Ethernet (10/100/1000 Mbit/sec – autosense)
(2) Optional	Gigabit Ethernet (10/100/1000 Mbit/sec – autosense) IBM Token-Ring (4/16 Mbit/sec.)

Other Hardware Options

NetShuttle Installation Kit	101-Key US Keyboard, Mouse, and 15" VGA Color Monitor
-----------------------------	---

Software Options

High-Performance TCP/IP	Multi-path Channel + (MPC+)
-------------------------	-----------------------------

Host TCP/IP Stacks Supported

IBM	OS/390
-----	--------

Certifications

Emissions	FCC Class A, ICES-003 Class A, CISPR 22 Class A, EN55022 Class A, EN55024 and EN61000-3-2, AS/NZS 3548, VCCI Class A, RRL.MIC 1997-41and 42, GOST 29216-91 & 50628-95
Safety	UL 1950 – CSA 60950 (UL and cUL), EN 60950, IEC 60950, NEMKO/EMKO-TSE and GOST R 50377-92

The
Solution
is simple.

BUS-TECH
INC.