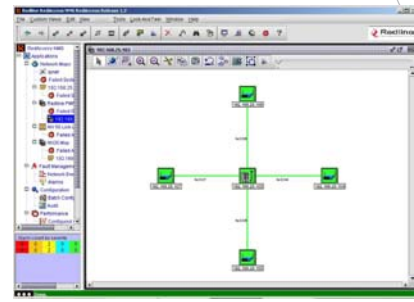
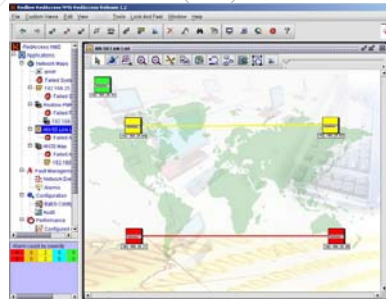


RedAccess Network Management System

Features

- Graphical Mapping
- Automatic Node Discovery
- Display Status & Alarms
- Configure SNMP Traps
- Store Network Events
- Display Historical Statistics
- Remotely Manage Client Interfaces
- Firmware Upgrade Utility
- Advanced Security Administration
- MIB Browsing
- SQL Database Driven Server
- SNMP Based
- Server MS Windows XP/2000/NT
- Client MS Windows XP/2000/98/ME/NT



Advanced network products require an advanced network management system (NMS). RedAccess is a fully featured NMS designed to manage Redline's products for carriers, mobile operators, wireless ISP (WISP) enterprise and multiple-building markets. RedAccess is a client/server-based NMS supporting its own SQL database management system. Remote application clients can concurrently access the server locally or remotely.

RedAccess provides a high level of functionality for carrier-class operations at a fraction of the cost, compared with conventional NMS systems. It is easy to install and operate with default features for smaller operators, but also allows an abundant number of user-customizable features to meet the needs of the largest operators. RedAccess is designed around an extremely flexible, yet sophisticated architecture. A database server acts as the information storage manager, interfacing to the AN-50, AN-30 & AN-100 system nodes in the network through the SNMP agent; it provides a secure database to store information collected over long periods of time. Separate clients provide customized GUI access to the information on the server. Clients can display maps, status, events and alarms, while network components can be configured and standard tasks can be automated.

Real-time display of network status allows rapid problem solving and database-driven tools help to keep growing networks organized. Application clients can be used immediately or can be customized to meet the needs of almost any organization.

High-performance network links require five-9's reliability. The RedAccess system maximizes system reliability by offering a wide variety of powerful tools which can scale and grow as your network evolves.

RedAccess Benefits

- Supports up to 2400 network elements
- 12 month extendible support contract

Graphical Mapping: RedAccess provides an intuitive point-and-click map interface. Nodes and networks are displayed with color coding. Operators can drilldown through networks and nodes to examine node details. Multiple maps and views of maps can be created for maximum flexibility.

Automatic Node Discovery: RedAccess will search for Redline Network Elements including AN-50, AN-30 and AN-100 and automatically place these on the graphical map.

Provisioning: RedAccess helps configure Redline Network Elements and stores configuration information on the database manager to assist in setting up networks, backing up network configurations and making rapid network changes.

Display Status and Alarms: RedAccess will display the current status of network elements. Alarms generated are displayed with color coding on maps and tables. Details are maintained on a database for the management of outstanding alarms and to assist in debugging and maintenance.

SNMP Traps: RedAccess is designed for maximum flexibility. SNMP Traps are captured and displayed as network events and alarms.

Store Network Events: Network events are stored in an SQL database. Operators can view historical events for ongoing management and maintenance.

Display Historical Statistics: Statistics can be stored and maintained over hours, days or even months so operators can look at trends and changes over time. Statistics are stored on a separate SQL database for flexible reporting and maintenance.

Remotely Manage: The operator's GUI is run from a separate client application which can run remotely from the server. An operator in remote locations can control the server to receive status

information. An operator could manage the system from an office location or from a remote service location.

Advanced Security Administration: Security administration allows operators to create users with limited capabilities. Typical features include adding a user, defining permitted operations for a particular user, or defining limitations on information available to a particular user. This would allow, for example, granting remote operators control over a subset of the network.

Auditing Function: The system provides a detailed audit trail for operations performed by the users. Status of whether the operation was a success or failure is also indicated. Changed device parameters are logged and timestamped.

Policies: System policies can be defined and customized for alerts and escalation, status test, configuration backup, table cleanups, alert logs, event logging, report generation and more.

Performance Monitoring: RedAccess allows the viewing of historical data via graphs and reports, real-time monitoring of data, threshold notification and creation of custom views of collected data.

SQL Database Driven Server: RedAccess includes a separate SQL database server. By using a separate server for monitoring and data storage, display and management functions can be accessed from wherever the client interfaces are located.

SNMP Based: RedAccess directly polls SNMP information from the Redline Network Elements.

MS Windows NT/2000/XP Based: The RedAccess server is supported on the MS Windows NT/2000/XP operating systems. The application client can be operated on the MS Windows NT/2000/98/ ME/XP operating systems.

About Redline Communications Inc.

Redline Communications is an innovative provider of broadband fixed wireless solutions, helping companies reduce costs, extend and enhance networks and increase customer satisfaction. Redline is a leader in using OFDM technology to provide robust high speed wireless connectivity even in partial or non line of sight conditions. Redline is a principal member of IEEE 802.16 and Wimax, committed to establishing global standards for the fixed wireless industry.

Redline's products are recognized for their unique capabilities in providing backhaul links and high speed access links to urban and rural service providers. Redline has more than 5,000 systems installed by customers in over 30 countries in industries as diverse as school boards, manufacturing, Internet providers, transportation, government, and health care facilities.