

# Instalasi UI-View

(APRS 201)



Set Up UI-View untuk APRS

Suryono Adisoemarta

YD0NXX / N5SNN

# [ Apakah itu UI-View ]

- Program di PC untuk APRS
  - Yang paling populer saat ini utk Windows
  - Dibuat oleh Roger Barker G4IDE (SK)
- Opsi lain untuk PC:
  - APRS+SA
  - Xastir (native di linux)
  - WinAPRS

# [ Mengapa UI-View ]

- Supported
  - Banyak add-on programs (“*hooks*”)
- Mudah set-up
- Mudah memasang peta tambahan
  - Cocok untuk Indonesia
- Fleksibel
  - rumah, portable, digi, igate, wx, dll

# [ Versi dari UI-View ]

---

- 16-bit
  - Untuk hardware lama
  - Limited
  - Tidak perlu registrasi
- 32-bit
  - Full feature
  - Perlu registrasi

# [ Registrasi UI-View32 ]

- Perlu registrasi untuk mendapatkan serial number
- Donationware: diharapkan sumbangan untuk lembaga kanker
- Registration site:  
<http://www.apritch.myby.co.uk/uiv32.htm>
- Pilih UI-View32 dan bendera Inggris (utk pilihan bahasa Inggris)

# Registrasi – Step 1

UI-View32/Winpack Registration

Intro Registration

Registration

You can register UI-View32 and Winpack from this page

UI-View32 Registration - APRS

Winpack Registration - Packet BBS

Donation Websites

- UK
- Hospice
- USA
- BE
- CH
- FR
- IT
- NL
- UK
- DE

# Registrasi – Step 2a

UI-View32 Registration

Intro Registration

Registration

You can register UI-View32 and Winpack from this page

About UI-View32/Winpack Author

Roger Barker G4IDE - Author of Winpack, UI-View and UI-View32 died of cancer on 8 September 2004.

Before Roger died; it was stated that both he (Roger) and Dee would like any new user of UI-View32 to contribute, on an entirely voluntary basis, to their national Cancer Research organization

Registering UI-View32 - APRS

To obtain a registration code (may take a few hours to be processed):

1. Read the section 'About UI-View32/Winpack Author' at the top of this page.
2. If you do not hold a valid Amateur Radio License do not bother to apply.
3. Fill in your details in the form below and then click on Register UI-View32
4. Wait a few hours

Download UI-View32

Full Install

Upgrade Only

Precision Mapping Add-On

More Information

V5 Download

V6 Download

Support

Scroll down

YDONXX

# Registrasi – Step 2b

UI-View32 Registration - Microsoft Internet Explorer provided by Global Information Link

File Edit View Favorites Tools Help

Address [http://www.apritch.myby.co.uk/uiv32\\_uiview32.php?lang=english](http://www.apritch.myby.co.uk/uiv32_uiview32.php?lang=english)

Roger Barker G4IDE - Author of Winpack, UI-View and UI-View32 died of cancer on 8 September 2004.

Before Roger died; it was stated that both he (Roger) and Dee would like any new user of UI-View32 to contribute, on an entirely voluntary basis, to their national Cancer Research organization

### Registering UI-View32 - APRS

To obtain a registration code (may take a few hours to be processed):

1. Read the section 'About UI-View32/Winpack Author' at the top of this page.
2. If you do not hold a valid Amateur Radio License do not bother to apply.
3. Fill in your details in the form below and then click on Register UI-View32
4. Wait a few hours...
5. Fill in your details in the form below and then click on Previously Registered

Callsign

First & Last Name

Submit

© Copyright 1999-2007. All rights reserved. Contact: Andy Pritchard - MOCYP  
Design by Andreas Viklund

Full Install  
Upgrade Only

### Precision Mapping Add-On

More Information  
V5 Download  
V6 Download  
Support

Done Internet

Start 27 Inter... 4 Windo... Microsoft ... To-downlo... Inbox - Mi... APRS201 - ... 2:23 PM

Isi kedua  
Kotak ini

Klik  
Yang kiri



# [ Registrasi – Step 3 ]

- Tunggu 1 – 2 hari
- Lalu kembali ke website itu lagi
- Tapi sekarang klik yang “Previously Registered”

# Registrasi – Step 4

UI-View32 Registration - Microsoft Internet Explorer provided by Global Information Link

Address: [http://www.apritch.myby.co.uk/uiv32\\_uiview32.php?lang=english](http://www.apritch.myby.co.uk/uiv32_uiview32.php?lang=english)

Roger Barker G4IDE - Author of Winpack, UI-View and UI-View32 died of cancer on 8 September 2004.

Before Roger died; it was stated that both he (Roger) and Dee would like any new user of UI-View32 to contribute, on an entirely voluntary basis, to their national Cancer Research organization

### Registering UI-View32 - APRS

To obtain a registration code (may take a few hours to be processed):

1. Read the section 'About UI-View32/Winpack Author' at the top of this page.
2. If you do not hold a valid Amateur Radio License do not bother to apply.
3. Fill in your details in the form below and then click on Register UI-View32
4. Wait a few hours...
5. Fill in your details in the form below and then click on Previously Registered

Full Install

Upgrade Only

### Precision Mapping Add-On

More Information

V5 Download

V6 Download

Support

Callsign:

First & Last Name:

Submit

© Copyright 1999-2007. All rights reserved. Contact: Andy Pritchard - M0CYP  
Design by Andreas Viklund

Done Internet

Start | 27 Inter... | 4 Windo... | Microsoft ... | To-downlo... | Inbox - Mi... | APRS201 - ... | 2:23 PM

Kedua  
Kotak ini  
Sudah terisi

Klik  
Yang KANAN

# Kode Registrasi

UI-View32 Registration - Microsoft Internet Explorer provided by Global Information Link

Address: <http://www.apritch.myby.co.uk/getRegCodeUIV.php>

Site Network: Home UI-View Propagation Weather Site Map

## UI-View32 Registration

Intro Registration

### Registration

You can register UI-View32 and Winpack from this page

UI-View32 Registration

```
Hi Suryono Adisoemarta

Before Roger died; it was stated that both he (Roger) and Dee would like any new
user of UI-View32 to contribute, on an entirely voluntary basis, to their national
Cancer Research organization

Callsign : YDONXX
Name      : Suryono Adisoemarta

UI-View Registration Code : 2003569
APRS Server Validation Number : 170

*** DONATION WEBSITES ***

[UK] http://www.cancerresearchuk.org/donate/
```

Done Internet

Start | 27 Inter... | 4 Windo... | Microsoft ... | 2 Micros... | Inbox - Mi... | APRS201 - ... | 2:37 PM

# [ Instalasi UI-View32 ]

- Install yang versi 32 bit
- Nama file: 32full203.exe
- Double-click *namafile*
- Start | Programs | UI-View
- Masukkan serial number
- Peta kepulauan Inggris akan terlihat

# [ Memasang Peta Tambahan ]

- Beberapa peta tambahan tersedia:
  - Amerika
  - Asia
  - SE Asia
  - Eropa
- Di unzip dulu semuanya
  - Muncul pasangan files
    - Peta
    - INF file
- Letakkan semuanya di : C:\Program Files\Peak System\UI-View32\MAPS

# [ Menambah Peta Lokal ]

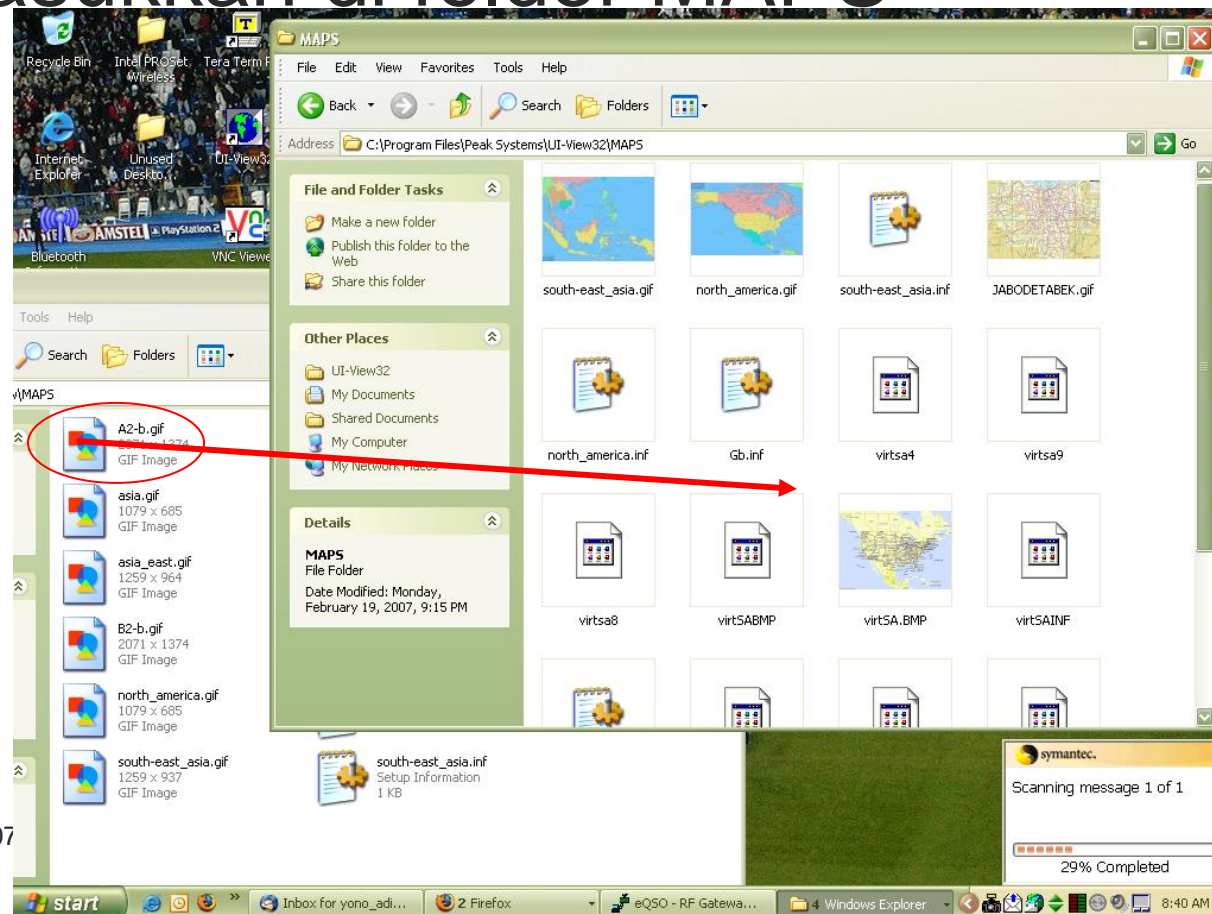
- Peta Lokal: peta detail dari daerah yang diminati
- Format: BMP, PNG, JPG, GIF atau EMF
- Syarat: posisi dari dua titik, dengan posisi *melintang* digambar, diketahui
- Program akan crash kalau kedua titik itu horisontal atau vertikal

# [ Kalibrasi Peta - Overview ]

1. Masukkan file peta ke direktori MAPS  
c:\program files\PEAKS\UI-View32\MAPS
2. Tarik (drag) peta lokal yang di direktori MAPS ke program UI-View
3. Akan muncul dialog box
4. Pilih 2 point calibration
5. Klik di gambar lokasi kalibrasi, akan muncul tanda X berwarna merah
6. Masukkan koordinat-nya
7. Klik OK, map sudah siap

# Menambah Peta – Step 1

- Masukkan di folder MAPS

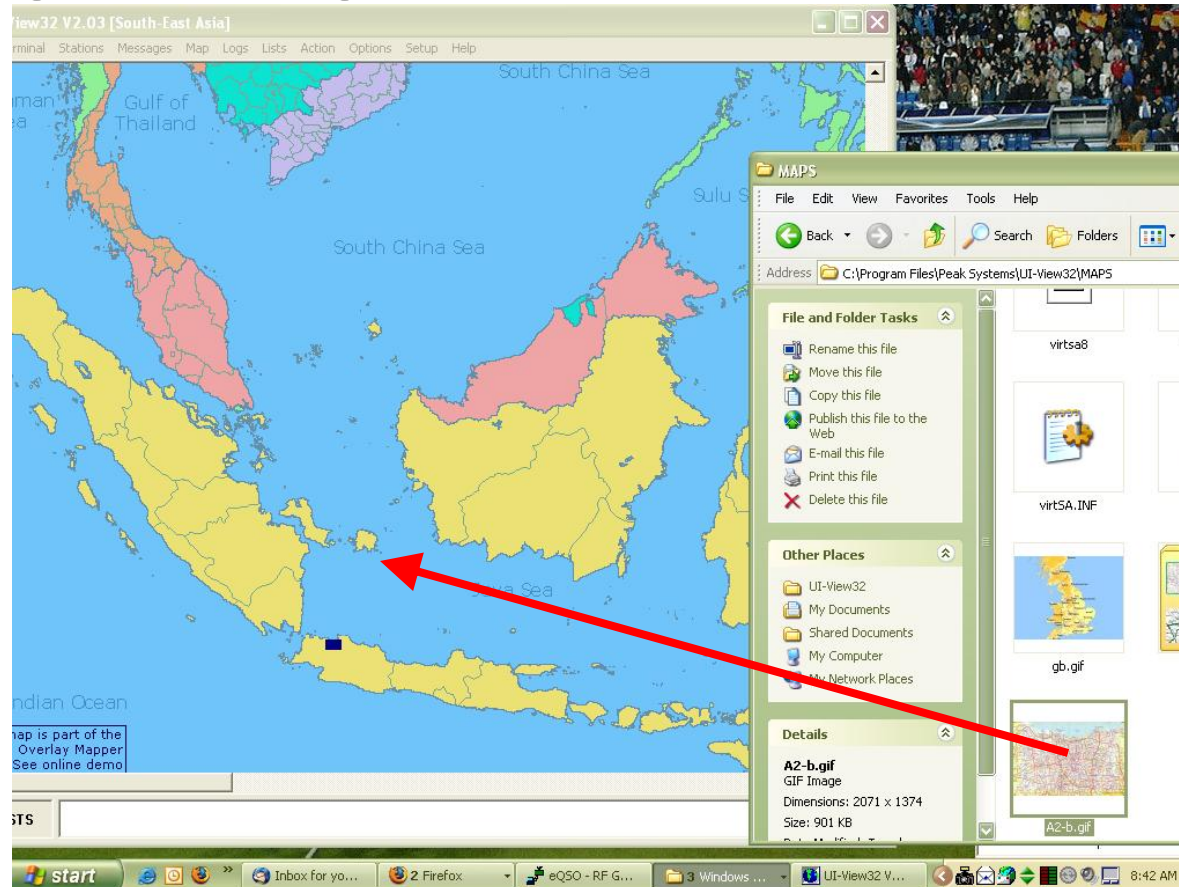


Rev 3.1 - 130407



# Menambah Peta – Step 2

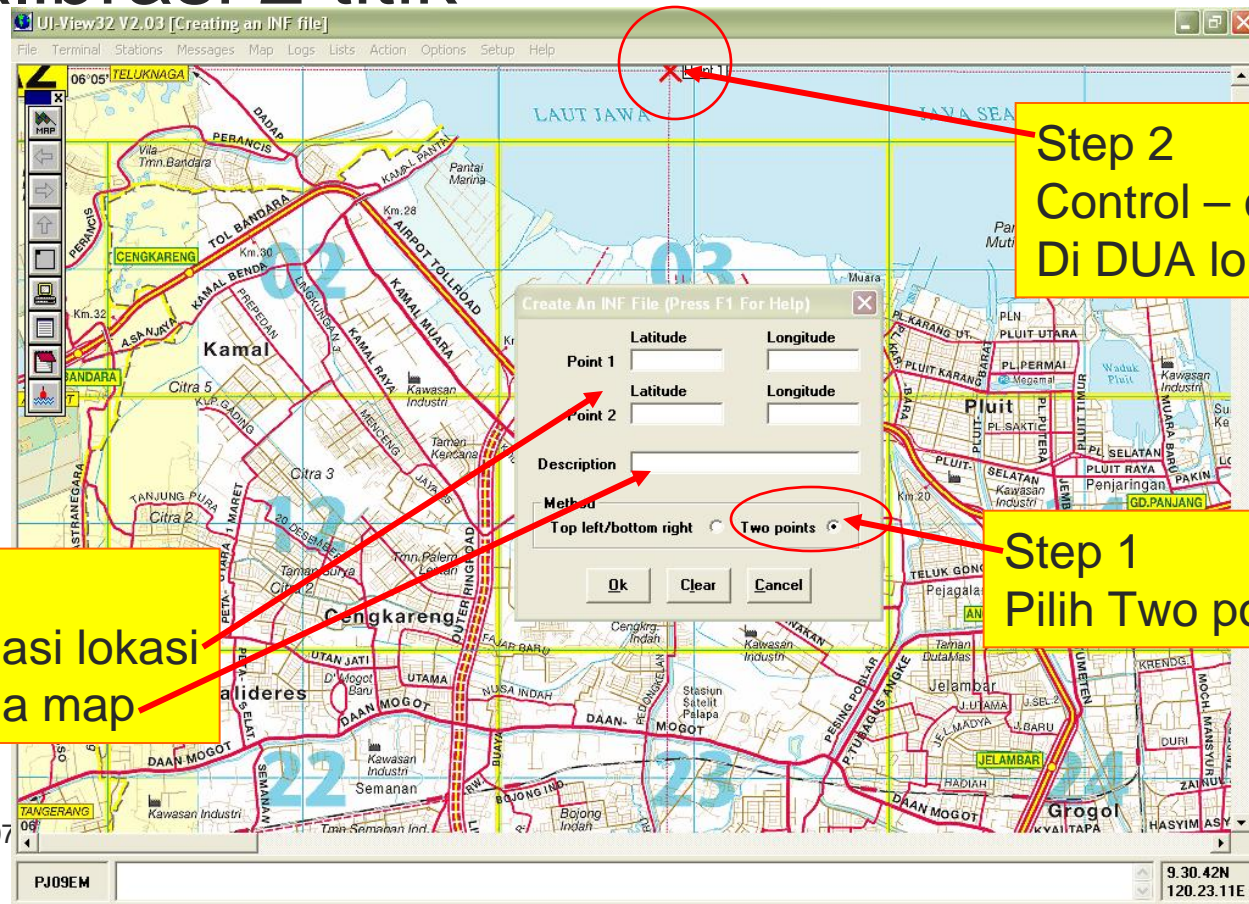
- Drag ke program UI-View



Rev 3.1 - 130407

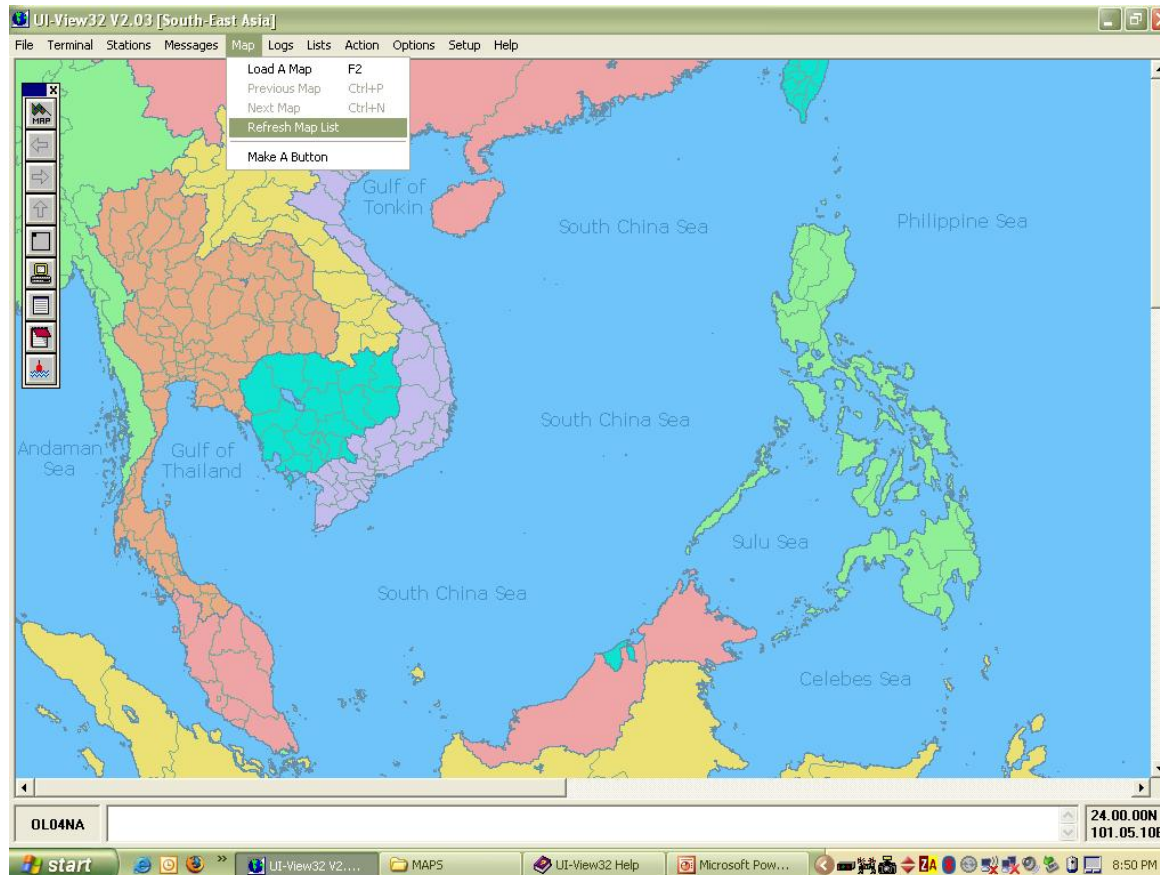
# Menambah Peta – Step 3

## ■ Kalibrasi 2 titik



# Menambah Peta – Step 4

- Menambah dalam list



Rev 3.1 - 130407

# [ Konfigurasi ]

- Callsign: callsign anda plus SSID
- SSID (Secondary Station ID):
  - Optional
  - Kalau punya lebih dari 1 stasiun
  - Lihat slide berikutnya untuk tabel SSID
- Path:
  - Static / Home Station: **WIDE2-2**
  - Mobile: **WIDE1-1, WIDE2-1**
  - **Jangan** gunakan konsensus lama (RELAY, TRACE, dll)
- Radio: simplex di 144.39 MHz

# [ Pilihan SSID ]

- 0 Home Station, Home Station running IGate.
- 1 Digipeater, Home Station running a Relay Digi, Wx Digipeater
- 2 Digipeater [#2 or] on 70CM
- 3 Digipeater [#3]
- 4 HF to VHF Gateway
- 5 IGate (Not home station)
- 6 SatGates & Special function Station.
- 7 Kenwood D7 HH
- 8 Secondary Mobile station (802.11 in the future)
- 9 Primary Mobile station
- 10 Internet only stations with no RF equipment
- 11 ARHAB (Amateur Radio High Altitude Balloon)
- 12 Portable Units such as Laptops etc.
- 13 Unassigned
- 14 Trucks
- 15 Mobile HF station.

# [Layar Setup]

- **Pertama** kali akan muncul help screen, silakan dibaca lengkap, lalu tutup layar tersebut
- **Kedua kali** akan muncul layar yang diinginkan
- Yang perlu:
  - Station info
  - Comm Port



# [ Station Info – Unproto Address ]

- destination dan digipeater path digabung menjadi satu
- labeled "**Unproto Address**" in the "**Setup, Station Setup**" dialog
- Isinya harus:
  - " **APRS,WIDE2-2** "
  - " **APRS,WIDE1-1,WIDE2-1** "
  - Dipisahkan dengan koma, tidak ada spasi

# [ Station Info - Location ]

- Catatan kecil kalau tidak menggunakan GPS
- UI-View menggunakan format Degrees, Minutes and hundredths of Minutes
  - bukan: 3345.14N
  - tetapi: 33.45.14N



# [ Set Up Soundcard ]

- Install Program
  - Dua versi: regular (free) dan PRO (\$49)
  - Versi free sudah cukup
  - Perlu hardware (kabel ke radio)
- Konfigurasi
  - Bisa 2 channel (stereo soundcard)
  - Namanya: *tracker*
- Percobaan
  - Gunakan soundcard adjustment menu
  - *Menu ?*

# [ Testing ]

- Komponen yang terkait:
  - Software: Ulview
  - Soundcard TNC: AGWPE
  - Kabel ke radio
  - Radio
- Prosedur testing
  - Ikuti aliran data
  - Gunakan alat bantu (radio kedua, dsb)

# [ Masalah Potensial ]

- Tidak termonitor
  - Masalah PTT
    - Serial port (kalau soundcard based)
    - HT perlu resistor di audio line (kecuali Kenwood)
  - Power terlalu rendah
- Audio
  - Level (terlalu tinggi / rendah)
- Hum
  - Ground loop
  - Perlu isolasi

# [ Biaya ]

- Radio ??? (radio bekas)
- Antena + coax ???
- Komputer ???
- TNC free (soundcard)
- Software
  - AGWPE free
  - UI-VIEW free (*donationware*)
  - Map free (scan dari peta)
- Tracker
  - Tinytrak \$ 30 (kit)
  - OpenTracker \$ 32 (kit)
- GPS Rp 250rb – 1,1 jt

# [ Catatan Akhir ]

- Gunakan:
  - Antena yang sebaik mungkin
  - Deviasi yang benar (slightly under is better)
- Jangan menggunakan:
  - RELAY, TRACE
  - Antena directional (cegah “*hidden transmitter syndrome*”)

# [ Referensi ]

- APRS Protocol
  - <http://Info.aprs.net>
  - [http://www.n5oom.org/2004\\_hamcom/presentations/Intro\\_to\\_APRS.pps](http://www.n5oom.org/2004_hamcom/presentations/Intro_to_APRS.pps)
  - <http://www.ui-view.org/>
- Tracker
  - <http://n1vg.net/opentracker/>
  - <http://www.byonics.com/tinytrak/>
  - <http://www.tigertronics.com/gpssuprt.htm>
  - <http://www.foxdelta.com/products/foxtrak.htm>
- Anti-Tracker
  - <http://www.radio-active.net.au/web/tracking/antitracker.html>
  - <http://www.qsl.net/kc2elo/antitrack.htm>
- Penjejakan
  - <http://almostangels.org/balloons/>